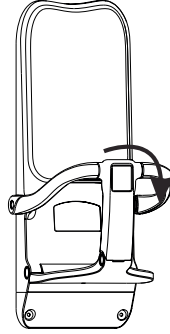


# **Child Protection Seat**

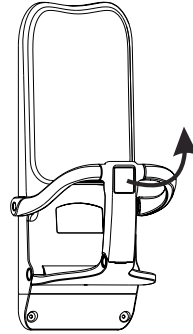
Operation Manual

# Method of usage

1. Unfold the unit as shown on the right.



2. After use, close the table.



## Terms of guarantee

1. The product warranty period is one year.
2. The service within warranty period for products, which came into effect from the date of buying the machine.
3. Within one year after purchasing, consumers find the machine failure caused by the product itself reason, then they can go to the purchasing place to maintenance and replace the machine for free with original invoices and completed and quality assurance card stamped by dealers.
4. The following are not in the scope of free maintenance: improper use and fault caused by demolition, alteration and repair by technical persons without our company authorization. fires, earthquakes, thunder and other natural disasters cause the faults. Artificial damage or not in accordance with the instructions operations causes fault not quality assurance card or the cards is flit not explicitly or correctly.
5. Over warranty period or it is not free maintained products, while our company remains committed serving.

# Warning

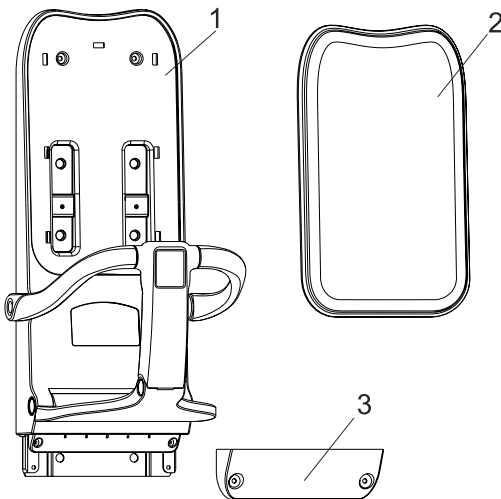
1. Do not away from child, never leave child unattended.
2. Take care of the child, avoid serious injury from falling or sliding out.
3. The child is not allow to stand or lie on the unit.
4. Children forbidden hanging on the unit, there are risk of falling.
5. Designed for children only, age up to 2.5 years and weighing less than 15kgs.



## Products Features

1. Easy to use and hygiene. The unit is made in quality ABS, easy to clean and reduce the growth of microbes.
2. Easy to open and close, space-saving. Foldable design provides optimization, closing the table when not in use.
3. Safety use. With safety fence to better protect baby and keep safety.
4. Product use. The unit can be used in hospitals, restaurants, hotel, shopping centres and malls, stations & airports, family and some public places.

## Parts and hardware



- 1, main part
- 2, Backrest
- 3, Brackets in parentheses
- 4, Fixing screws



# Method of Installation

